

SNUG HARBOR

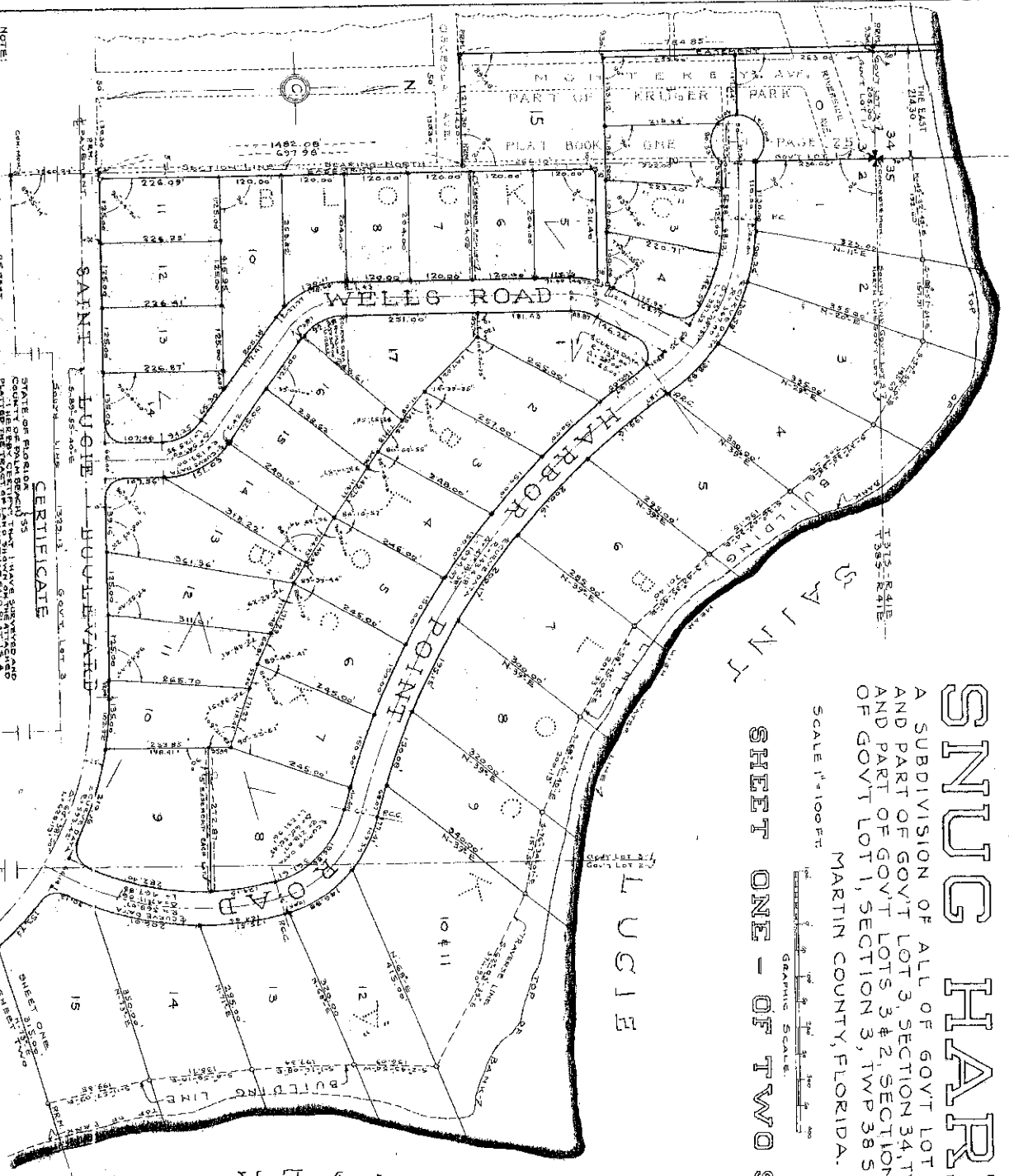
A SUBDIVISION OF ALL OF GOV'T LOT 5, SECTION 35, AND PART OF GOV'T LOT 3, SECTION 34, TWP 37 S, RGE 41 E, AND PART OF GOV'T LOTS 3 & 2, SECTION 2, AND PART OF GOV'T LOT 1, SECTION 3, TWP 38 S, RGE 41 E.

MARTIN COUNTY, FLORIDA. DECEMBER 1945.

SHEET ONE - OF TWO SHEETS

SHEET ONE & TWO DEDICATION

PLAT BOOK	2
PAGE 47	
SHEET NO. 1	



NOTE:
 ALL BOUND AT STREET INTERSECTIONS - 25 FEET
 FOUR EASHPHASE BEHIND OF LOTS - BOUNDARY
 OF EASHPHASE BEHIND OF LOTS - BOUNDARY
 ALONG NORTHEAST CORNER OF LOTS - BOUNDARY
 CONCRETE MONUMENTS AT LOT CORNERS
 MONUMENTS AT LOT CORNERS IN REAR OF LOTS -
 FROM PILE AT CURVE POINTS EACH SIDE OF CANAL

STATE OF FLORIDA
 COUNTY OF MARTIN
 I, *Geo. W. Carr*, Notary Public, do hereby certify that the foregoing plat and map were filed for record in the public office of the State of Florida, County of Martin, on the 12th day of December, 1945, and that the same are a true and correct copy of the original as the same were presented to me for filing.

CERTIFICATE

SUBSCRIBED AND SWORN TO BEFORE ME
 this 12th day of December 1945.
 NOTARY PUBLIC
Geo. W. Carr

APPROVED *Alvin* 1945
 BOARD OF COUNTY COMMISSIONERS
 BY: *Alvin*

IN 2 SHEETS SHEET NO. 1
 GEO. W. CARR,
 REGISTERED CIVIL ENGINEER AND SURVEYOR
 CERTIFICATE NO. 1273-1-10
 WEST PALM BEACH, FLORIDA

ACKNOWLEDGEMENT
 STATE OF FLORIDA
 COUNTY OF COOK
 BEFORE ME THIS DAY PERSONALLY APPEARED
 MAURICE B. WELLS, President of SNUG HARBOR
 CORPORATION, and acknowledged that he executed
 and acknowledged the foregoing plat and map
 and uses therein stated on behalf of the said
 CORPORATION.
 WITNESS MY HAND AND OFFICIAL SEAL THIS 31st DAY OF
 JANUARY 1946

ATTEST: *Alvin*
 SECRETARY

M. B. Wells
 PRESIDENT
 SNUG HARBOR CORPORATION

KNOW ALL MEN BY THESE PRESENTS THAT THE
 SNUG HARBOR CORPORATION, A CORPORATION
 ORGANIZED AND EXISTING UNDER THE LAWS OF
 BUSINESS IN FLORIDA, HAS CAUSED THE ATTACHED
 PLAT TO BE MADE AND THE HONORABLE MURRAY
 DEDICATE FOR THE PERPETUAL PRIVATE USE OF THE
 LOT OWNERS WELLS HARBOR CANAL AND HARBOUR
 UNITS TO BE HELD IN TRUST FOR THE BENEFIT OF
 THE REVERSION OR REVERSIONS THEREOF WHETHER
 GRANTED, DEED STIPULATIONS VIOLATED OR DISOBTAINED
 BY THE OWNERS WHEREOF IT HAS CAUSED THE
 PRESIDENTS TO BE SIGNED BY THE PRESIDENT AND
 BY ITS SECRETARY
 THIS 31st DAY OF JANUARY 1946.

SCALE 1" = 100 FT.
 GRAPHIC SCALE

MY COMMISSION EXPIRES *Aug 17 1947*

REFERENCES: T. 37 S.
 R. 41 E. SEC. 2, 3, 5, 34, 35

DRAWING NO. 2365

